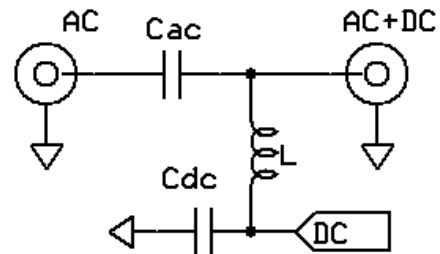




Model BT-UHFa BIAS TEE



A Bias Tee is used to either insert or extract DC power to / from a coaxial cable. It can be used to send dc power up a cable to an antenna mounted pre-amp or coax relay. The Model BT-UHFa has a useful frequency response covering from 2m to 23cm bands (144 MHz to 1.3 GHz). It is rated to 50 Vdc and 2 Amps.

Parameter	Value	Notes
S21 Insertion Loss	< 0.7dB	140 MHz - 1.5 GHz
typical IL	0.6dB (2m), 0.5dB (70cm)	0.2dB (33cm) 0.5dB (23cm)
Low Frequency Cut-Off	65 MHz	S21 = -3 dB
1st Resonance	2.6 GHz	
Capacitors	10 nF & 6.8 μ F	C _{ac} & C _{dc}
Inductor	62 nH	shunt inductor
DC Ratings	50 Vdc & 2 Amps dc	
RF Connectors	SMA	female, jacks
DC Connector	feed-thru capacitor	solder terminal
Dimensions	1.65" x 1.3" x 0.45"	excluding SMAs & feed-thru cap pin. machined all metal enclosure
	2.4" x 1.7" x 0.45" overall	
Test Report	furnished with plot of S21	sweep 0 to 1.5 GHz